

# 2009 BYOS 1 QUOTE REQUEST FORM

Distributor Name \_\_\_\_\_ Phone \_\_\_\_\_

Address \_\_\_\_\_ Fax \_\_\_\_\_

Contact Name \_\_\_\_\_

Dealer/Builder Name \_\_\_\_\_ Phone \_\_\_\_\_

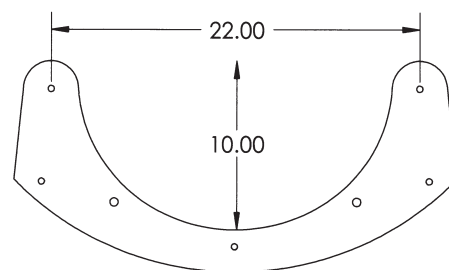
Address \_\_\_\_\_ Fax \_\_\_\_\_

Contact Name \_\_\_\_\_

Job Reference \_\_\_\_\_ Est. Build Date \_\_\_\_\_

## STEP ONE

1. What is entry height above deck? \_\_\_\_\_
2. What is exit height above deck? \_\_\_\_\_
2. What is the estimated length of runway? \_\_\_\_\_



BYOS 1 Flume Dimensions

## STEP TWO

1. Provide us with a drawing of your slide.

(Anything from a napkin drawing to an actual CAD drawing will suffice.)

**Please Note:** Height, slope and actual length of slide will be adjusted as close to your design as possible. Actual designs may vary.

2. Choose Slide Color: (pick one)

Standard Colors:  Tan (-51);  Gray (-52);  Summit Gray (-53)

Upgrade Colors:  Mont Blanc (-54);  Pebble (-55);  Fashion Gray (-56);  Cappuccino (-57)

## STEP THREE

1. Decide if you would like assist rails and provide appropriate lengths, if applicable.

2. Seating Assist Rails:  Surface Mount 3.5" Flange;  Sub-Surface Mount

3. Climbing Assist Rails:  Surface Mount 3.5" Flange;  Sub-Surface Mount

Length:  24";  36";  48";  Custom Length \_\_\_\_\_

4. Choose Assist Rail Color: (pick one)

Standard Colors:  Stainless Steel

Upgrade Colors:  White (-1);  Earth (-3);  Light Gray (-9);  Hammertone Gray (-6);

Copper Vein (-4)

## STEP FOUR

**FAX this form to Steve Cook**  
**520-790-7127**



**INTER-FAB INC. • 3050 S. Alvernon Way • Tucson, AZ 85713 • 800-737-5386**